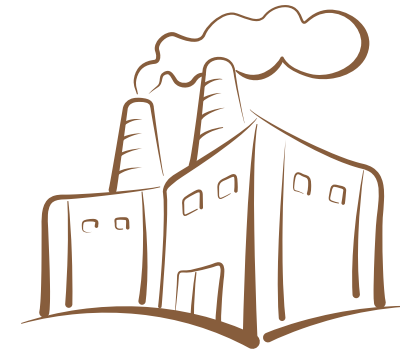


الإستشاري
سليمان عبدالله الخريجي
Solaiman A. El Kherei
Consultant



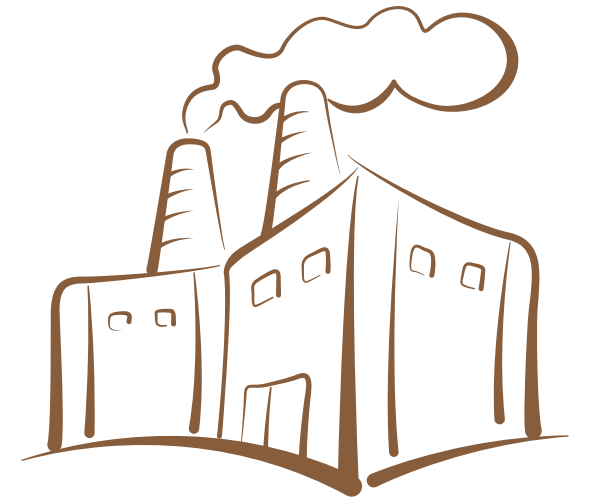
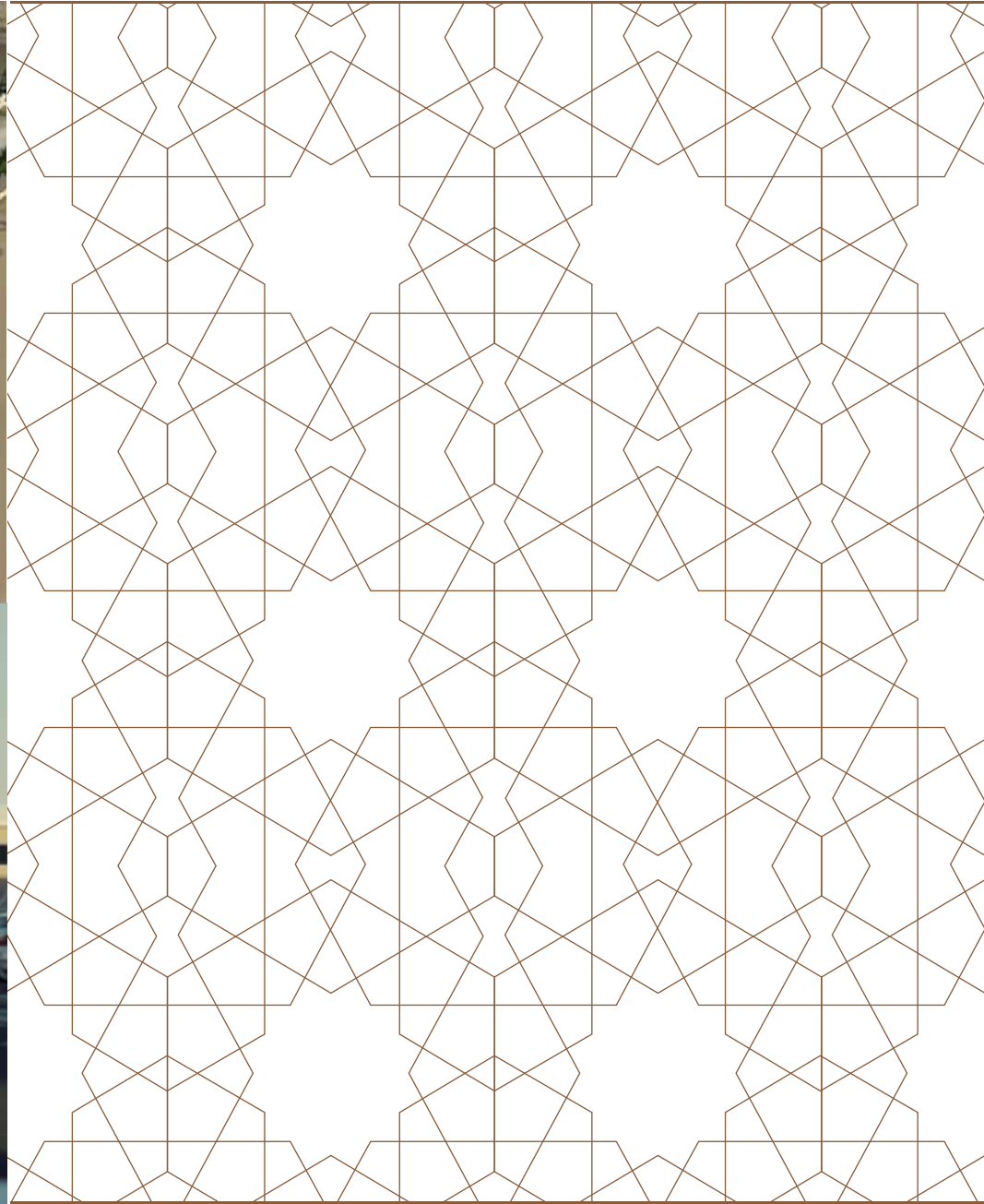
INDUSTRIAL

At SAK we always go beyond our client's expectations



ص.ب ٢٣٨٨ جدة ٢١٤٥١ - المملكة العربية السعودية
هاتف: ٦٦٩٥٩٦١ / ٦٦٩٣٢٩٤ فاكس: ٦٦٠٢٣٢٥ ١٢ ٩٦٦
P. O. Box 2388, Jeddah 21451, Kingdom of Saudi Arabia
Tel.: +966 12 6693294 / 6695961 - Fax: +966 12 6602325
E-mail: solaiman@sak-consult.com www.sak-consult.com

Jeddah ♦ Riyadh ♦ Makkah ♦ Madinah ♦ Dammam ♦ London ♦ Milano
♦ Dublin ♦ Waterford ♦ Warsaw ♦ Istanbul ♦ Abu Dhabi ♦ Cairo ♦ Bangalore



INDUSTRIAL

Industrial:

SAK Consultants have designed and supervised major industrial complexes throughout the Kingdom of Saudi Arabia including industrial cities and economic cities. Our portfolio ranges from small Industrial units, Warehouses, Factory complexes and Labor Accomodations.

An Industrial project is a challenge to any Architectural or Engineering firm with its impact on the environment. At SAK we consult our Specialist Environmental Consultant partners and a lot of efforts are fed to our team to come up with environmentally accepted design solutions. We have recently completed the Design and are Supervising the construction of an Industrial complex in King Abdullah Economic City for a site area of approximately 800,000 sq. m which includes various factories and labor accommodation for more than 4000 laborers. At Jazan Economic City we are currently designing a Labor Camp for approximately 4700 laborers and Rental Facility on a site area of approximately 150,000 sq. m. This includes outdoor sports and leisure facilities, prayer hall, recreation centers, clinic and a huge dining area.

It is the Architect's perception, foresight and imagination to create through awareness of design, a unique transition of spaces culminating in the built environment in which we live, work and enjoy. Our philosophy places emphasis on quality of service, a high design awareness and cost control to maintain a client's budget. We have built a reputation for quality of service and produced projects of Architectural and design merit.



Kanoo Commercial Complex, Jeddah

Design consists of ground and mezzanine floors, mezzanine floor have office units and ground floor for warehouses and workshops as per requirements. The floor space below the mezzanine will be utilized for the storage of bulky/heavy items. Additional provision of overhead gantry cranes capacity as required provided also rail track at floor level across the shop floor to receive heavy items. The complex have main gate for the security control and the relief gate which would normally remain closed and shall be operated as and when required.





Design of 3 Workshops for Qatar Petroleum, Doha, Qatar

The project consists of the following components:

1. Rotating equipments workshop – Arab D.
2. HVAC workshop – DSSA.
3. Vehicle maintenance workshop – Shahaniya.
4. Mechanical covered area within the Arab D workshop.
5. Electrical Substation & Electric infrastructure upgrade – Arab D.
6. Ext. Civil works in ARAB-D, DSSA & SHAHANIYA

The scope of services covered the design of Civil, Architectural, Structural, Steel Structural, Mechanical (A/C Services, Water Services, Drainage Services, Fire Services & Sprinkler Services), Electrical, lighting, power, fire alarm, telephone and low current system) and other Building Services associated with the above buildings, in addition to the Bills of Quantities, Supporting Calculations, Diagrams, Comparison Sheets,...etc. required.

The project represents the importance of Qatar Petroleum Company as a major world company in the field of Oil and Gas and Petrochemicals.

Camp and Equipment Rental Facility for Namariq, Jazan Economic City

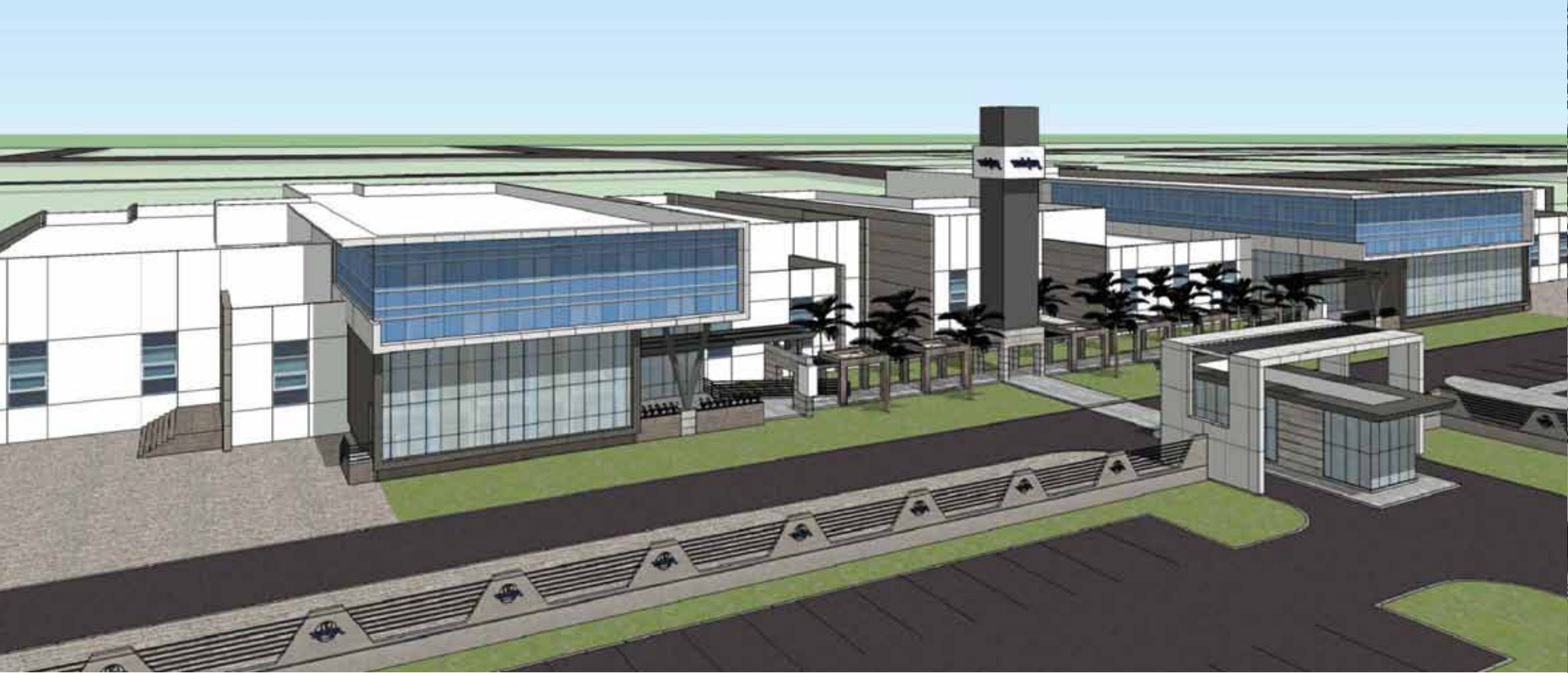
Jazan Economic City is expected to be among Saudi cities with major projects for next 68- years. The Client intended to build and operate a fully serviced camp with full capacity of 4000 men. The facility shall also include a Rental Equipment Facility to serve construction equipment rental needs of contractors.

This camp is intended to serve the need of suitable accommodation for workers and staff of companies who will be taking up construction projects and setting up industrial facilities. The camp shall be built and operated in accordance with applicable Local and International Standards and provide a pleasant and safe living environment for all occupants. The development will be located on a site of area approximately 150,000 m2.

The camp shall include all support facilities as indicated in the project design requirements and listed in this document.

The Equipment Rental facility shall have equipment yard, maintenance facility, rental and administrative offices, spare parts store, and an office for specialized manpower rental. The equipment rental area shall be separated from the accommodation area by a fence.





Julphar Pharmaceutical Plant, Rabigh

Gulf Pharmaceutical Industries (Julphar) as one of the leading Pharmaceutical manufacturers in the Middle East & South Africa, decided to establish a new production facility in the Kingdom of Saudi Arabia as an extended effort for its strategic expansion plans.

Julphar-Saudi Plant is a building with an approximate area of 17,830 m² accommodates a manufacturing facilities, utilities, & related offices in a form of three floors reinforced concrete slabs as follows:

- Level One (Basement) Floor: It includes all related building utilities
- Level Three (Ground) Floor: It includes the manufacturing, & packaging facilities as well as the stores
- Level Four (First) Floor: It includes technical areas, offices, & laboratories
- Service Block (Utilities): It includes Boilers, Air compressors, Water treatment system, Electrical switch gears, & stand-by generators, Water Cold Chillers, Pumps, & etc...

The engineering design concept for the facility comply with the latest FDA, GMP, & GLP standards in addition to the compliance with the local Saudi authority's regulations. SAK along with M & W Architects were commissioned to design facility.



SASO Laboratory for General Materials, Riyadh

The new building will be constructed adjacent to the existing building and with an architectural link required.

The building consists of all the necessary technical and administrative elements and departments important to accomplish the work. The building will create a very strong and distinguishable link with the other adjacent buildings and it will assure its importance and value with its complete services. The most dominant style of the building is futuristic design, and modern materials, and flexibility in the vertical and horizontal movements.

